

ROB MCKENNA
-MAGGI FIMIA
JANE HAGUE

May 20, 1997

Introduced By: Brian Derdowski

ELS Pk/Tr tg

Proposed No.: 97-240

MOTION NO. **10221**

1

2

3

4

A MOTION approving the scope of work for
the Eastlake Sammamish Parkway Conceptual
Design Assessment.

5

6

7

WHEREAS, traffic speeds and volumes are of
increasing concern to residents along East Lake Sammamish
Parkway, and

8

9

10

11

12

13

WHEREAS, a future East Lake Sammamish Trail has
been included continuously in county plans, beginning with
the adopted 1971 King County Urban Trails Plan, in order to
provide a safe bicycle/pedestrian facility in a heavily
traveled principal arterial corridor connecting popular
trails and major parks, and

14

15

16

17

WHEREAS, many factors, including the safety and
enjoyment of trail users and the proximity of the rail
corridor to private residences, will be considered in
locating the trail, and

18

19

20

WHEREAS, by Ordinance 12538, the Metropolitan King
County Council called for a conceptual design assessment for
this parkway/trail corridor to address trail location issues

1 and possible roadway improvements responding to the traffic-
2 related concerns of residents, and

3 WHEREAS, whereas, the objectives of addressing the
4 Parkway's traffic safety issues and of designing a trail for
5 non-motorized use can be best achieved by separate but
6 closely-coordinated planning efforts in which the Department
7 of Transportation and the Department of Parks and Cultural
8 Resources collaborate on any trail alternatives using public
9 roadways;

10 NOW, THEREFORE BE IT MOVED by the Council of Metropolitan
11 King County that the Scope of Work for the East Lake
12 Sammamish Parkway Conceptual Design Assessment (Attachment 1)
13 is hereby approved.

14 PASSED by a vote of 12 to 0 this 16th day of
15 June, 1997.

16 KING COUNTY COUNCIL
17 KING COUNTY, WASHINGTON

18 Louise Miller
19 VICE Chair

20 ATTEST:

21 Janet Masno
22 Deputy Clerk of the Council

23 Attachments: Scope of Work, East Lake Sammamish Parkway
24 Conceptual Design Assessment

10221

SCOPE OF WORK

FOR THE

**EAST LAKE SAMMAMISH
PARKWAY CONCEPTUAL
DESIGN ASSESSMENT**

PREPARED BY

KING COUNTY
DEPARTMENT OF TRANSPORTATION

PARKWAY SCOPE OF WORK

I. Provide Project Management

- A) Hire consultant, including landscape architect in consultation, to prepare conceptual design assessment
- B) Monitor project schedule (see Appendix B)
- C) Monitor project budget (see Appendix D)

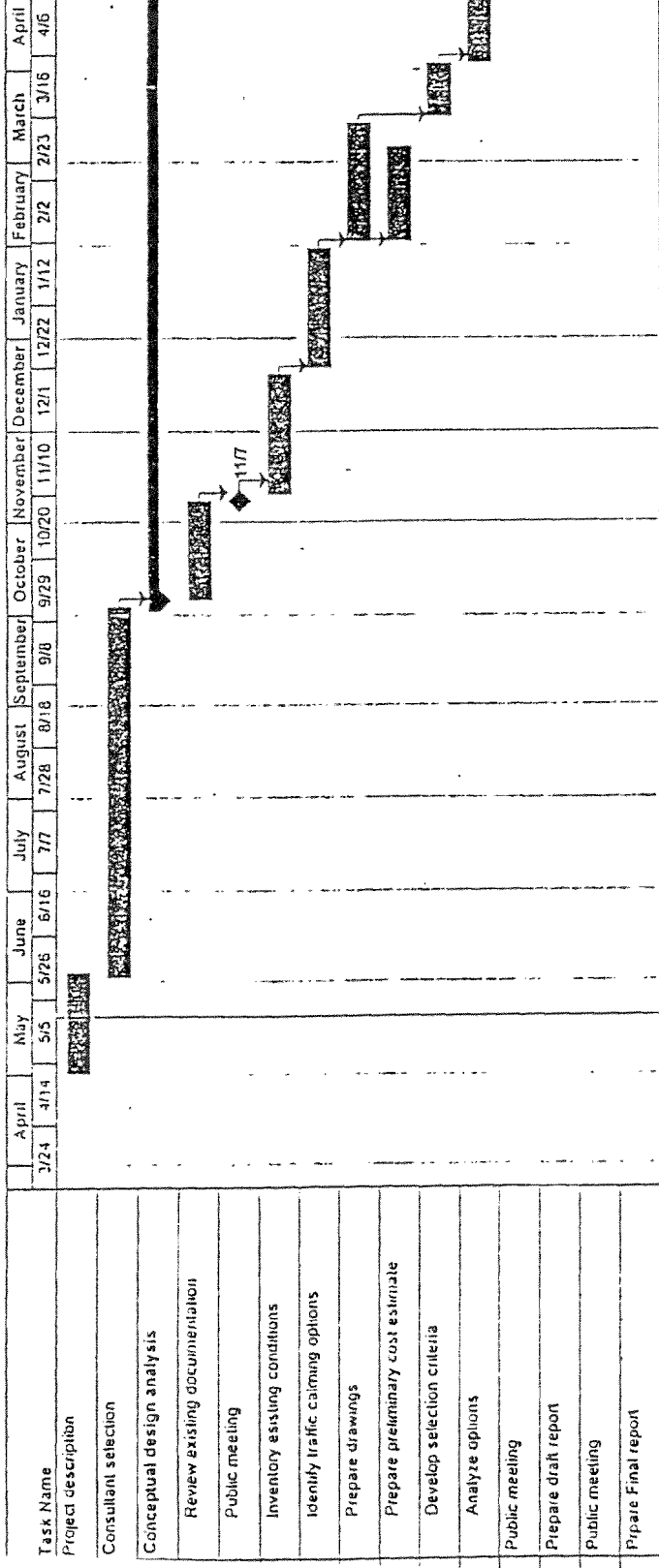
II. Public Communication Process

- A) Hold at least three (3) public meetings
 - 1) At the beginning of design assessment
 - 2) Prior to preparing draft design assessment
 - 3) Prior to preparing final design assessment
- B) Work with community representatives and Department of Parks and Recreation staff at monthly small group meetings throughout the design process
- C) Coordinate with the cities of Issaquah and Redmond and other affected agencies throughout design process including King County Department of Parks
- D) Produce a series of newsletters and distribute throughout design process
- E) Incorporate issues identified from the public communication process into report
- F) Consult with landscape professionals, particularly within jurisdictions which commonly apply traffic calming and boulevard landscaping practices, concerning best application and maintenance procedures

III. Parkway Design Analysis

- A) Review existing safety improvements for East Sammamish Parkway
 - 1) Review previous traffic safety and operational studies
 - 2) Review existing traffic safety and operational projects for their effectiveness
- B) Inventory existing conditions
 - 1) Inventory existing roadway facilities
 - 2) Inventory existing topography
 - 3) Inventory and classify existing sensitive areas
 - 4) Inventory existing property ownership
 - 5) Prepare base maps of existing conditions
- C) Identify potential traffic calming, safety and boulevard treatment options

Appendix B East Lake Sammamish Parkway Conceptual Design Assessment



ect:
e: 5/20/97

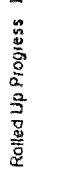
Task
Progress



Milestone
Summary



Rollled Up Task
Rollled Up Milestone



Rollled Up Progress